

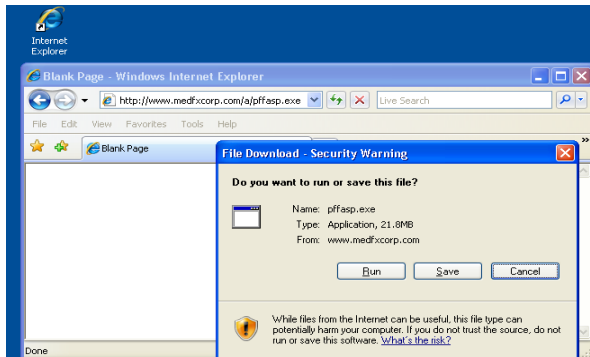
# MEDFX PM CLIENT TRADITIONAL FIREFOX PORTABLE INSTALLATION

The following procedure installs Java Runtime Environment 1.4.2\_17 and copies Firefox Portable onto your local PC. Administrator privileges are required for these instructions; if you do not have administrator privileges, please contact your IT Department.

**Note:** Firefox Portable is not installed but is instead copied to your local hard drive. The only application that is installed is the Java 1.4.2\_17 Runtime Environment.

**Additional requirements:** Adobe Reader 9.0 or higher can be downloaded from Adobe's website: <https://get.adobe.com/reader>

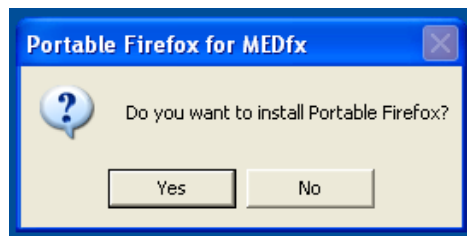
1. Open a web browser (Internet Explorer, Firefox) and navigate to: [www.medfxcorp.com/a/pff.exe](http://www.medfxcorp.com/a/pff.exe).
2. When prompted, select **Run** from the File Download dialog box.



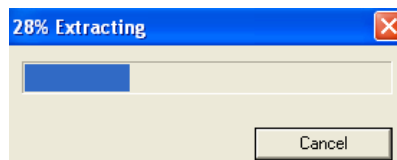
3. You will be prompted again to confirm that you want to install pff.exe; click **Run**.



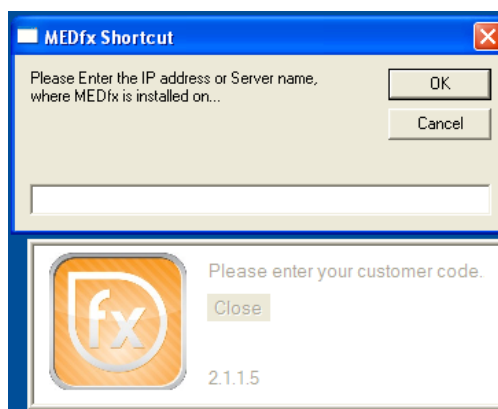
4. You will be prompted with a dialog box asking “Do you want to install Portable Firefox”; click **Yes**.



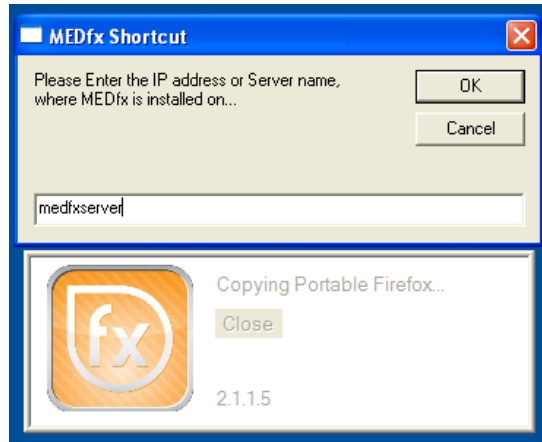
The installation will now begin; do not close this window.



5. You will now be prompted to enter the name of your server; type your server name in the box.

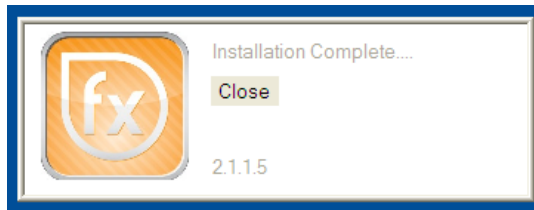


The following example uses “medfxserver” as the server name. The window with the name entered is shown below.



6. Click **OK**.

Wait until installation is complete, as shown in the image below:



7. Click **Close**.

You will now have an icon on your desktop for MEDfx.



## INITIAL MEDFX LOGIN

When you initially log into your practice, you may be prompted with the dialog boxes shown below. When applicable, select **Always**; otherwise select **Yes**.

